



St Andrews Heights, Sutton in Ashfield, NG17

£950 PCM

Location, Travel & Local Community

Discover the perfect blend of convenience and beauty at St Andrew's Heights, an exquisite new development featuring 2, 3, and 4-bedroom homes.

Nestled between the sought-after towns of Sutton-in-Ashfield and Mansfield, the location offers a tranquil setting surrounded by picturesque open fields. Enjoy a range of amenities right on your doorstep or immerse yourself in the charm of the historic village of Skegby which is within walking distance.

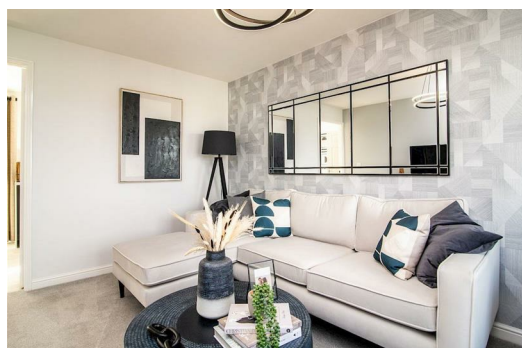
Education & SCHOOLS NEARBY

The area provides excellent opportunities for children aged 4-18, with a range of schools ranging from Kindergartens all the way up to Primary schools all within 1.5 miles of the site. Making the school run quick and easy.

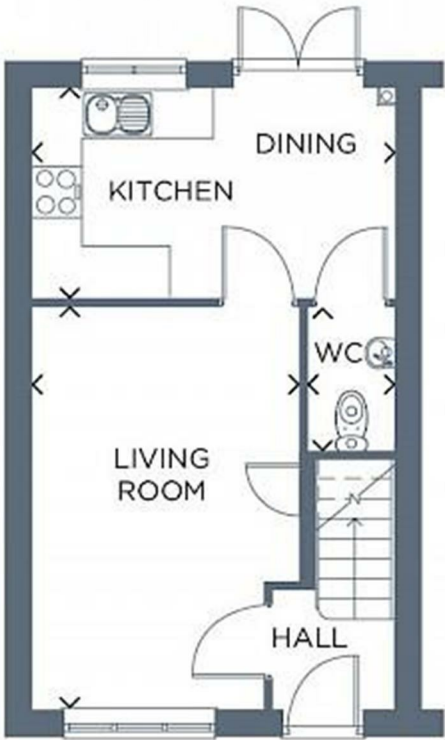
About Your Home – THE CORK

The Cork is an exceptional two-bedroom property available for rent. Step into this stunning home and experience a modern living environment designed to elevate your lifestyle.

Upon entering, you'll be welcomed into an inviting living room, thoughtfully designed to provide a comfortable space for relaxing and getting cosy on the sofa. The modern and fresh kitchen-diner awaits, offering the ideal setting for culinary delights and shared meals. Open the French doors and step out onto the rear garden, where you can bask in the beauty of the outdoors.



1 Rosebay Road, Sutton in Ashfield, NG17 3LW



Energy Efficiency Rating		Environmental Impact (CO ₂) Rating	
Very energy efficient - lower running costs	Score	Very environmentally friendly - lower CO ₂ emissions	Score
<div><div></div><div></div><div></div><div></div><div></div><div></div><div></div></div>	98	<div><div></div><div></div><div></div><div></div><div></div><div></div><div></div></div>	
A		A	
B		B	
C		C	
D		D	
E		E	
F		F	
G		G	
Very energy efficient - higher running costs		Not environmentally friendly - higher CO ₂ emissions	